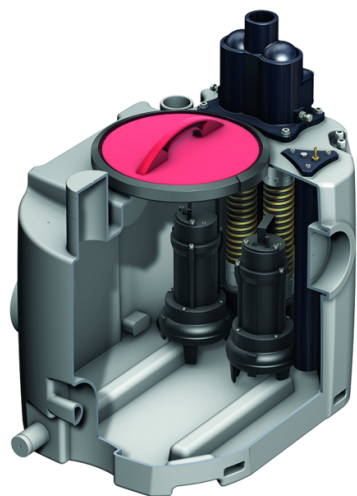


## Multi-Mini duo

### Product information for the product group



#### ACO Product benefits

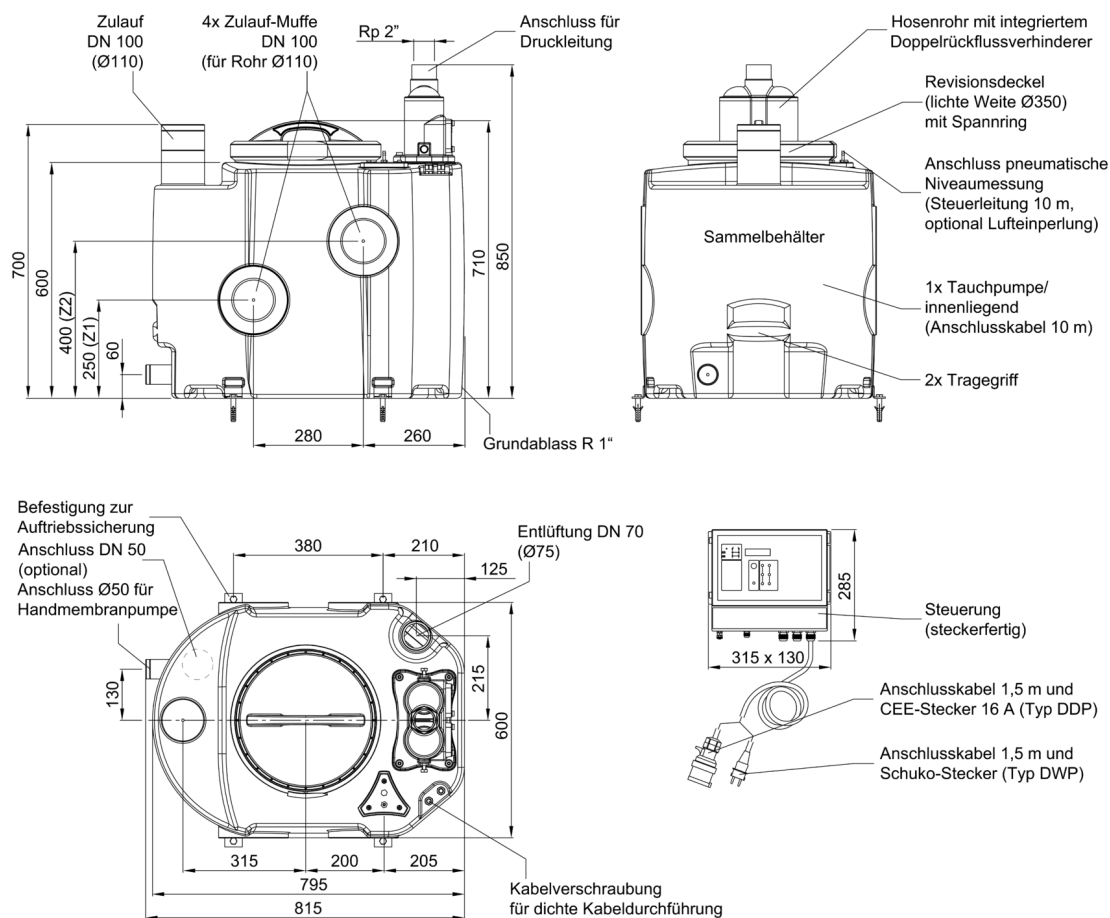
- Ready to connect
- Ergonomic carrying handles
- Different inlet heights can be selected
- High usable volume – up to 140 l
- All components with high chemical stability
- Suitable for installation downstream of grease separators up to NS 4
- Pump can be dismantled without tools
- Designed to fit through narrow doorways 700 mm
- Low weight

- Areas of application
  - Downstream of grease separators up to NS 4
  - Laundries
  - Rows of showers
  - Basement areas
- Polyethylene tank
  - Scour outlet R 1"
  - Service opening for simple maintenance, diameter: 340 mm
  - Fixing kit for attachment against floating
  - Connector for hand membrane pump DN 50
  - 4 horizontal intake sockets DN 100
  - 1 vertical inlet nozzle DN 100
  - Optionally 1 vertical inlet nozzle DN 50 (accessory)
  - 1 ventilation socket DN 70
- Connection pressure line
  - Special backflow stop with ball in housing
  - With venting and fixing screw
  - Connection: Rp 2"
- 2 grey water underwater pumps
  - With 3-phase submerged motor pump: 400 V, 50 Hz – Version D
  - With A.C. submerged motor pump: 230 V, 50 Hz – Version W
  - IP 68 protection
  - With blockage-free free flow impeller
  - 10 m mains cable
- Level switching
  - Pneumatic level switching with 10 m control lines
  - Optionally with air bubble injection for increased operational security when installing downstream of grease separators (accessory)
- Controls
  - IP 54 protection
  - 1.5 m cable and EEC plug (16 A) – version D
  - 1.5 m cable and safety plug (16 A) – version W
  - Mains-free group fault and operational messages
- Tested to DIN EN 12050-2

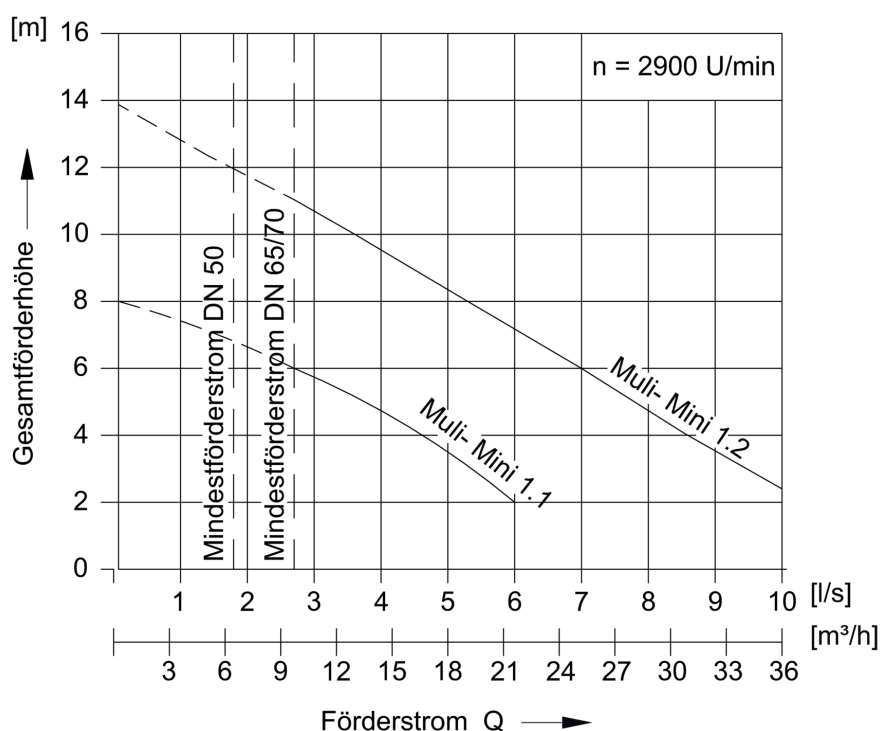
### Item Technical Data 1206.00.02

Type	Motor power		Power consumption	Voltage	Rev count	Granulation	Usable volume			Total volume	Weight
	P1	P2					Inlet height Z1	Inlet height Z2	Top inlet		
	[kW]	[kW]					[l]	[l]	[l]		
Multi-Mini DDP 1.2	1.5	1.1	2.6	400	2900	50	55	100	130	195	74

## Dimensions



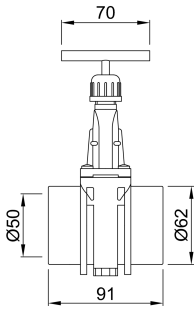
## Performance parameters



Type	Delivery head [m]	Delivery flow Q with overall delivery head H						Conveyance media temperature	
		2 m [l/s]	4 m [l/s]	6 m [l/s]	8 m [l/s]	10 m [l/s]	12 m [l/s]	Normal [°C]	Maximum [°C]
Muli-Mini DDP 1.2	2 – 12	10.3	8.7	7.0	5.4	3.6	1.8	40	65

## Accessories

	Description	Used with	Description	Item number
	Inlet valve DN 100	<ul style="list-style-type: none"> <li>Wastewater lifting plant</li> <li>Polyethylene grease separator</li> <li>Polyethylene starch separator</li> <li>Upstream tank plant <ul style="list-style-type: none"> <li>Typ 2 and 4</li> </ul> </li> <li>LipuMobil-P – Type 0.5</li> </ul>	<ul style="list-style-type: none"> <li>Made of PVC</li> <li>110 mm push socket on both sides with rim sealing ring</li> <li>Overall dimensions: 176 x 330 mm (L x H)</li> <li>Weight: 3.1 kg</li> </ul>	0175.13.84
	Inlet valve DN 100		<ul style="list-style-type: none"> <li>Weight: 5.9 kg</li> </ul>	0175.31.87

	Description	Used with	Description	Item number
	Inlet valve DN 50	<ul style="list-style-type: none"> <li>■ LipuMobil-P – Type 0,3</li> <li>■ Multi-Mini</li> </ul>	<ul style="list-style-type: none"> <li>■ Made of PVC</li> <li>■ DN 50</li> <li>■ With sealing ring as per DIN EN 19538</li> <li>■ Weight: 0.4 kg</li> </ul>	<b>0175.18.33</b>
	Connection ports		<ul style="list-style-type: none"> <li>■ DN 50</li> <li>■ Duct Type A 40 x 50 x R 1¼"</li> <li>■ Minimum height: 250 mm</li> </ul>	<b>0175.09.27</b>

You can find further accessories under → [/12060002](#)